

창조관 1층



AP



측정위치



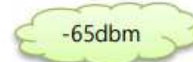
-45dbm

매우 좋음



-55dbm

좋음



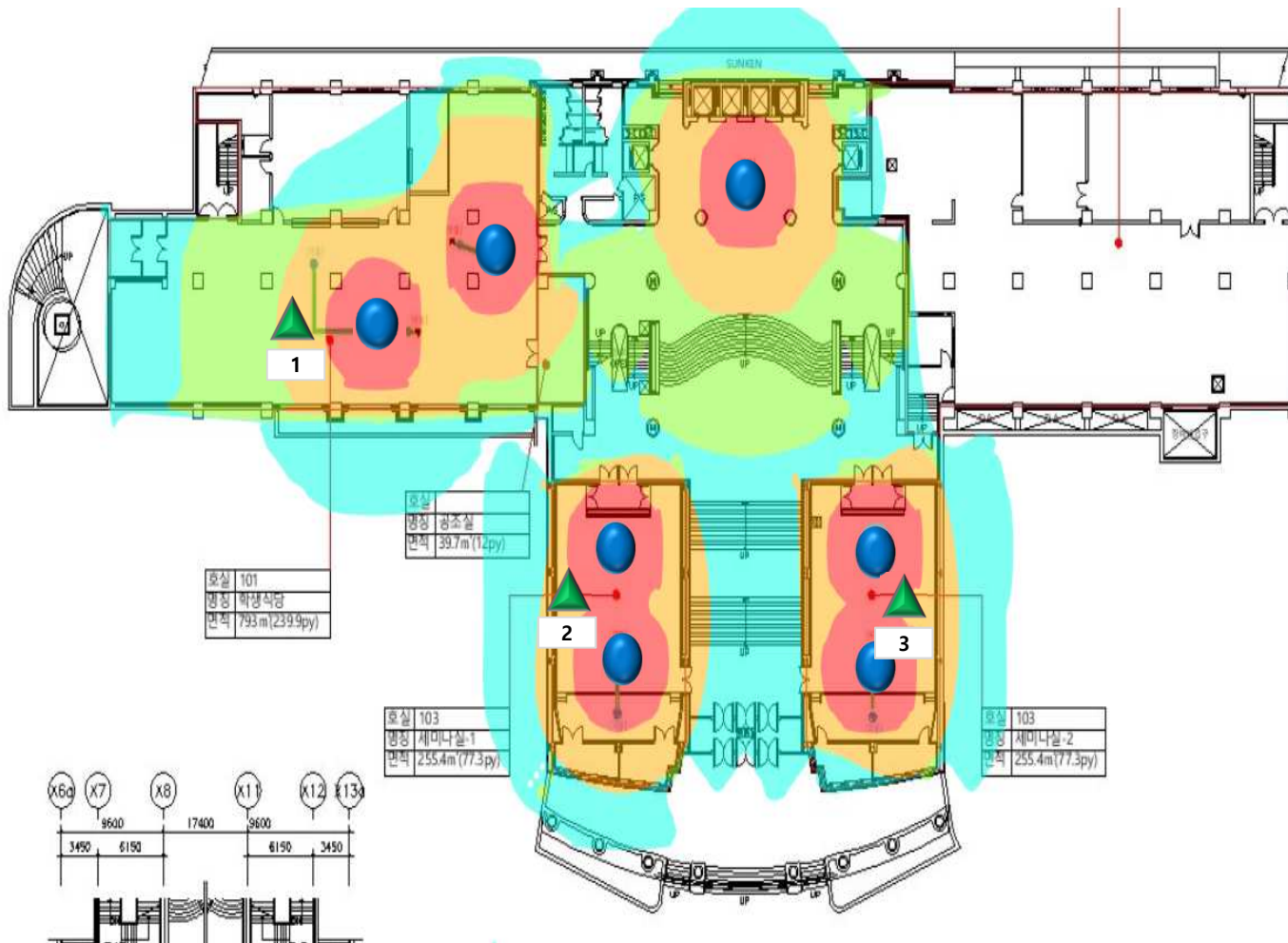
-65dbm

보통



-75dbm

약함



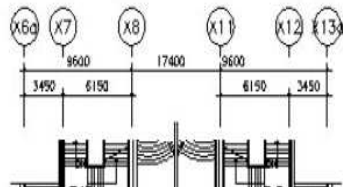
측정 위치	신호세기	Through Put Up/Down	
		Up	Down
1	- 48dbm	457M	387M
2	-51dbm	413M	396M
3	-50dbm	304M	274M

호실 101
명칭 학명식당
면적 793.0m(239.9py)

호실
명칭 권초실
면적 39.7m(11.2py)

호실 103
명칭 세미나실-1
면적 255.4m(77.3py)

호실 103
명칭 세미나실-2
면적 255.4m(77.3py)

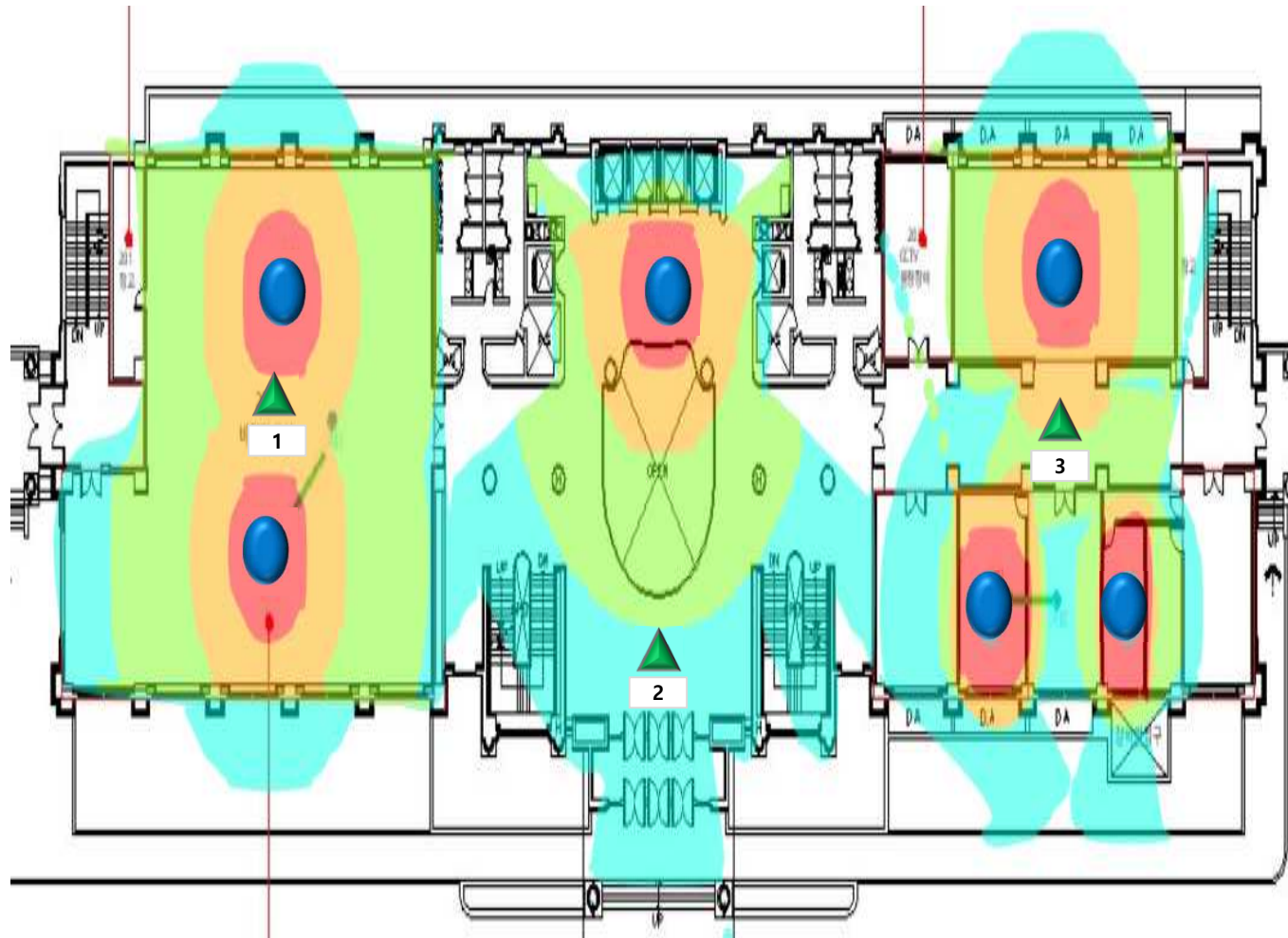


창조관 2층

AP
 측정위치

-45dbm
 -55dbm
 -65dbm
 -75dbm

매우 좋음 좋음 보통 약함



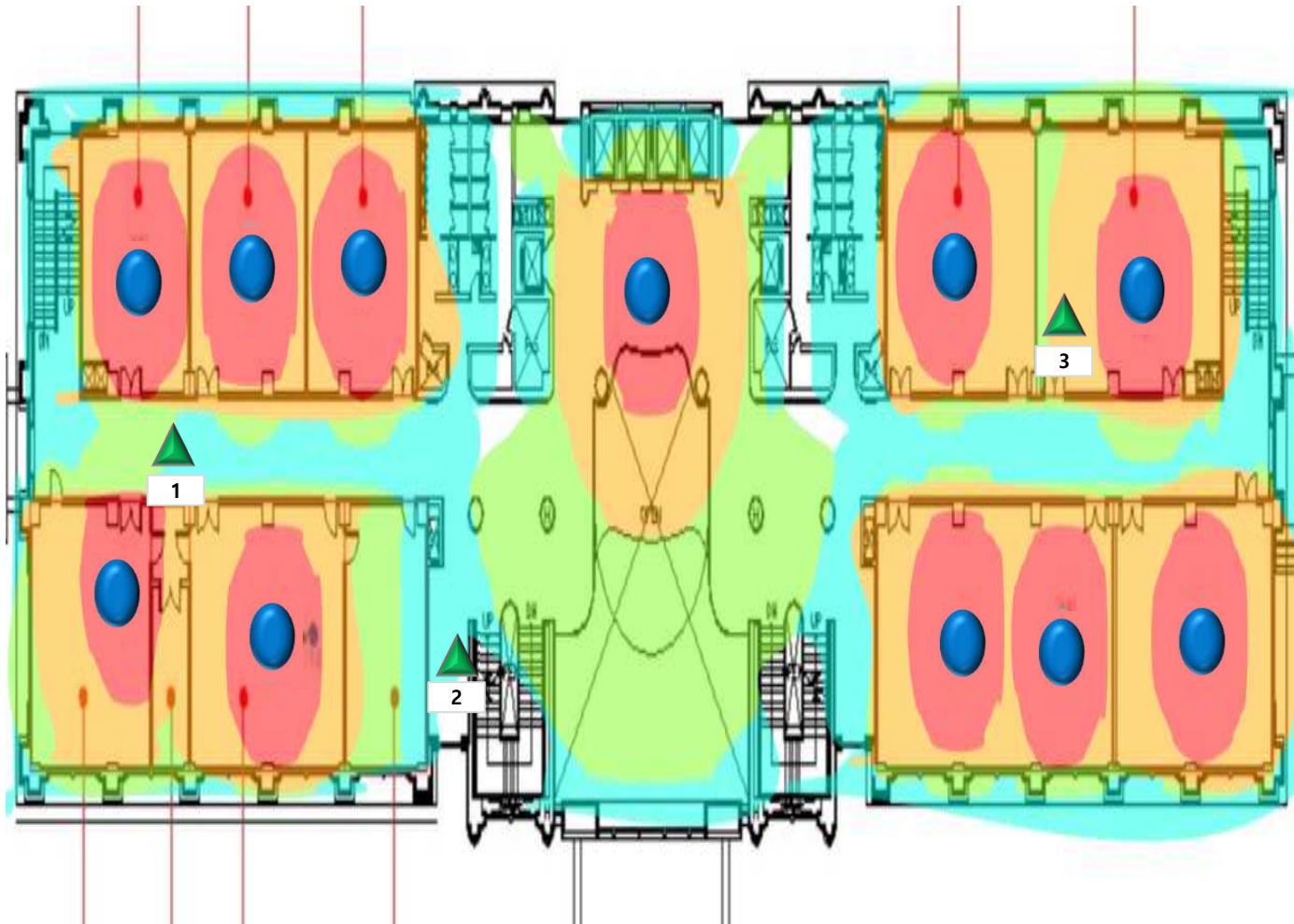
측정 위치	신호세기	Through Put Up/Down	
		1	- 44dbm
2	-68dbm	399M	381M
3	-59dbm	314M	288M

창조관 3층

AP 측정위치

-45dbm -55dbm -65dbm -75dbm

매우 좋음 좋음 보통 약함



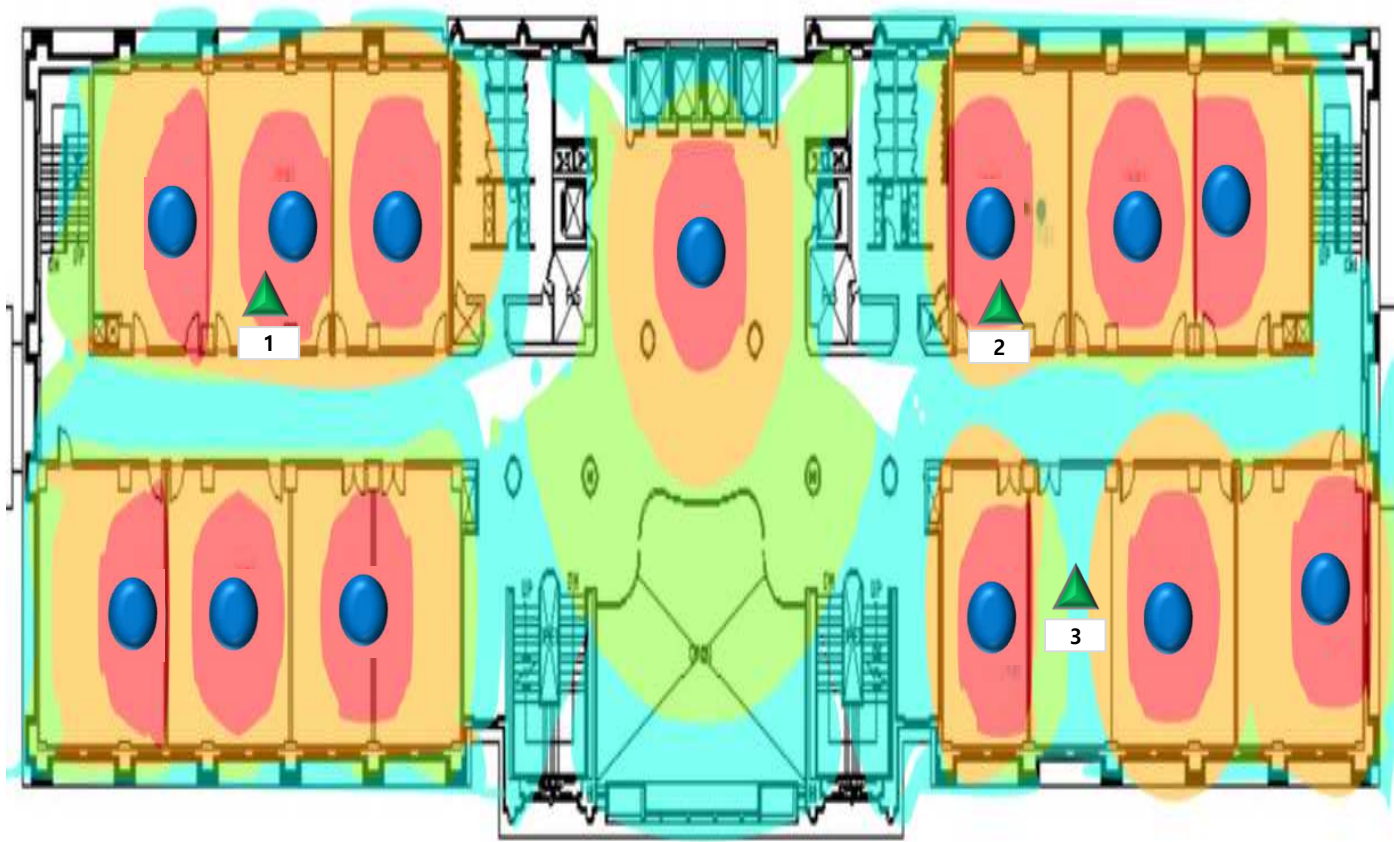
측정 위치	신호세기	Through Put Up/Down	
		Up	Down
1	- 57dbm	359M	343M
2	-55dbm	205M	97M
3	-47dbm	405M	382M

창조관 4층

● AP ▲ 측정위치

-45dbm -55dbm -65dbm -75dbm

매우 좋음 **좋음** **보통** **약함**



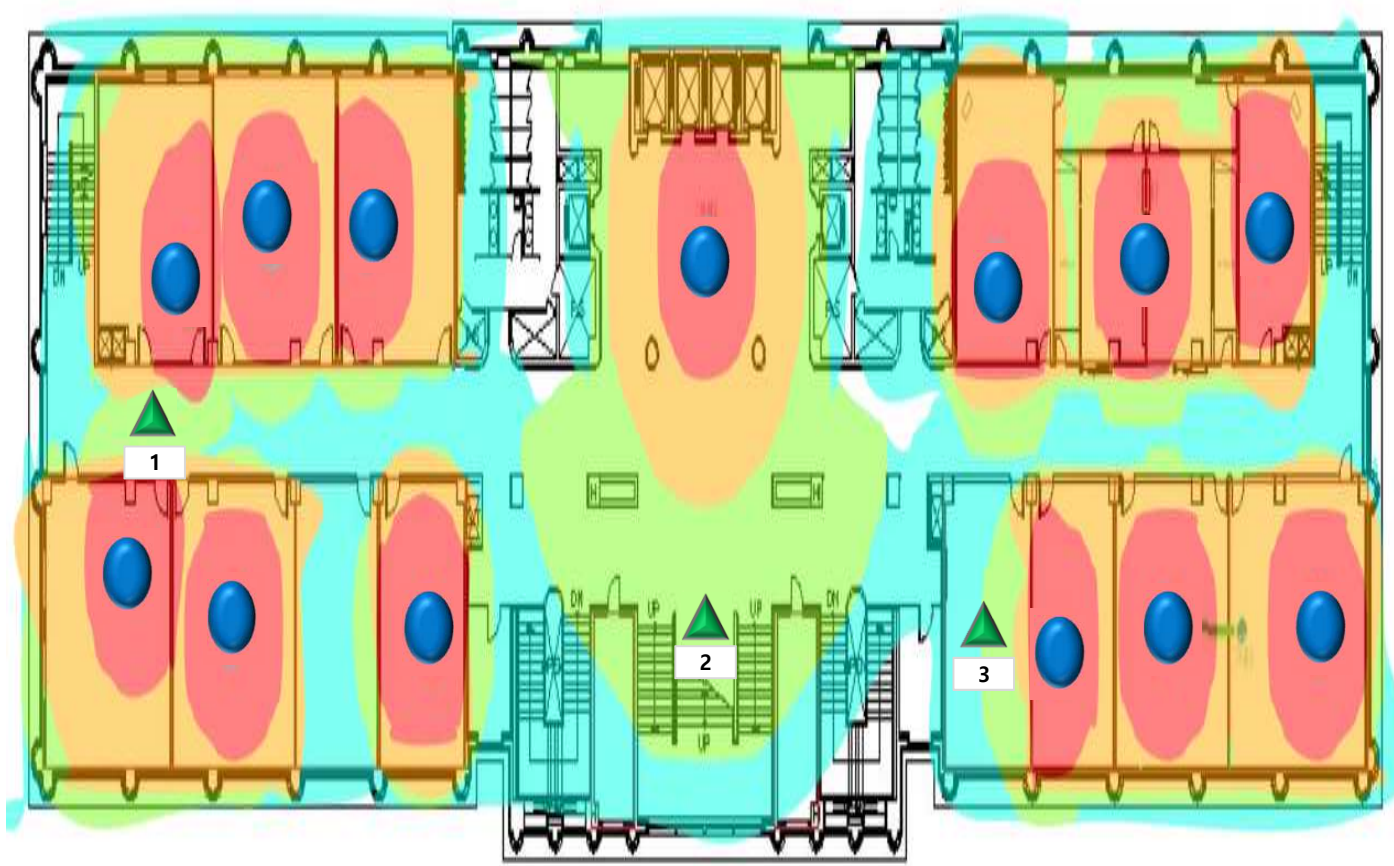
측정 위치	신호세기	Through Put Up/Down	
		1	- 45dbm
2	-46dbm	328M	301M
3	-59dbm	390M	278M

창조관 5층

● AP ▲ 측정위치

-45dbm -55dbm -65dbm -75dbm

매우 좋음 **좋음** **보통** **약함**

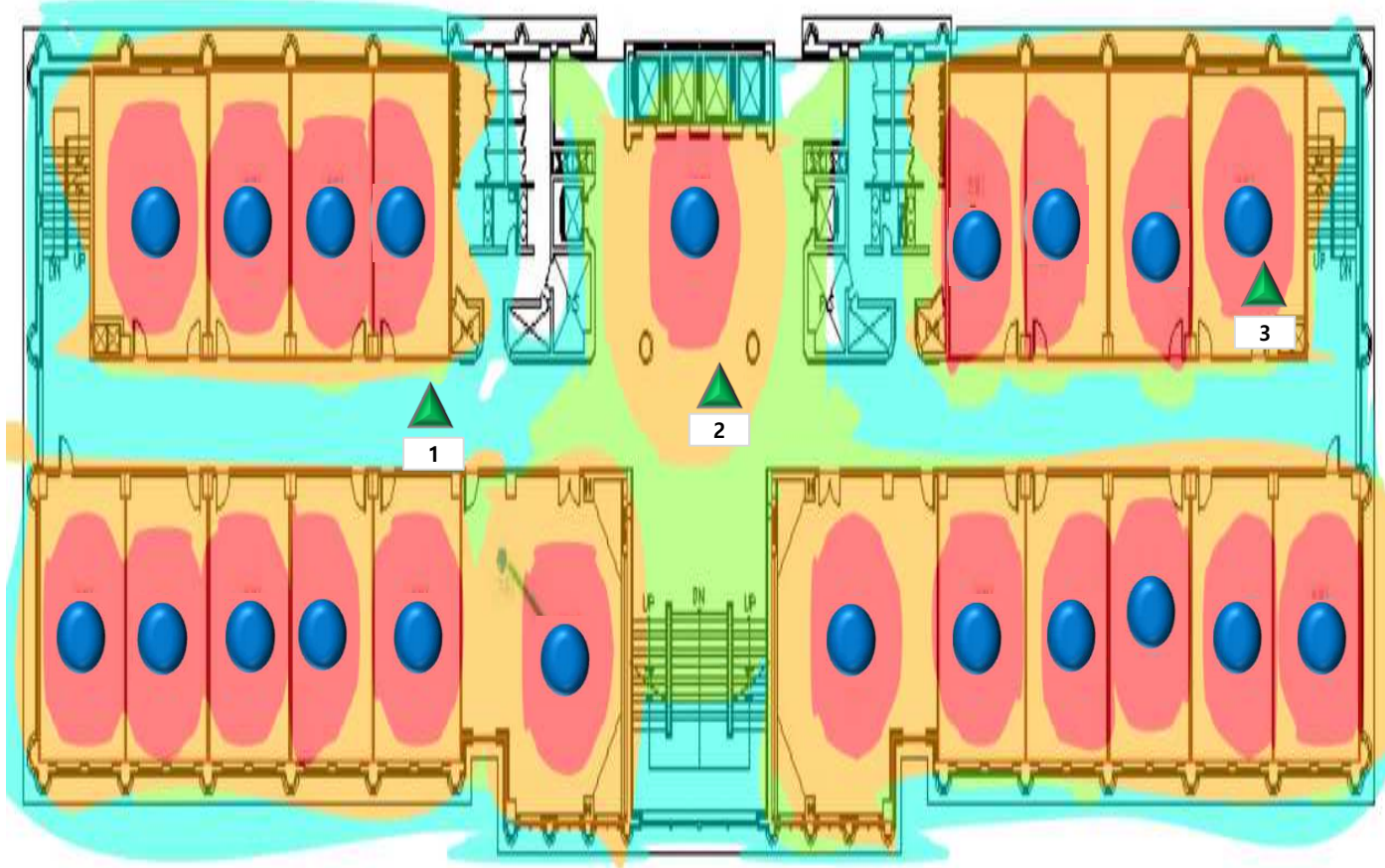


측정 위치	신호세기	Through Put Up/Down	
		1	-58dbm
2	-69dbm	286M	263M
3	-61dbm	291M	263M

창조관 6층

AP
 측정위치

-45dbm
매우 좋음
 -55dbm
좋음
 -65dbm
보통
 -75dbm
약함



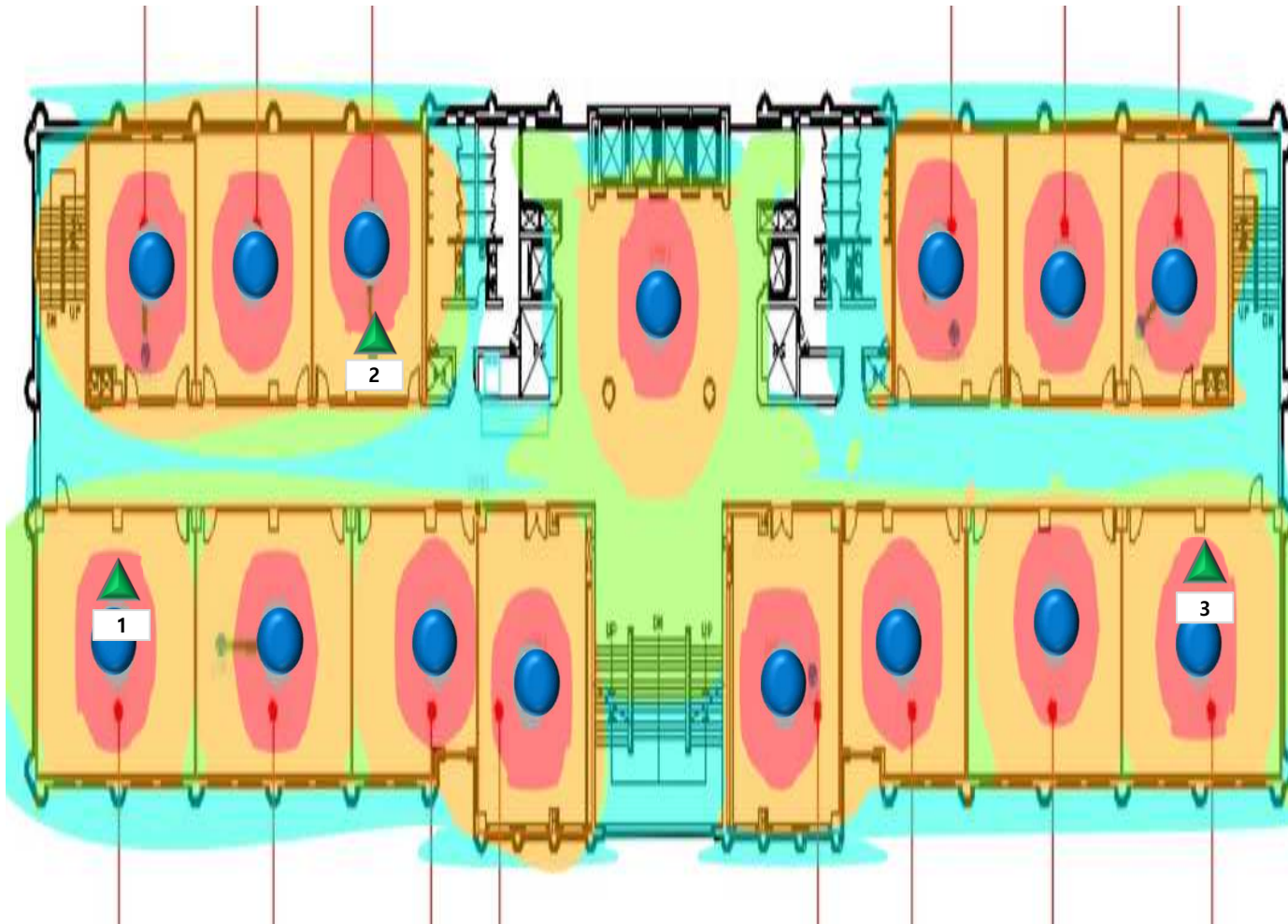
측정 위치	신호세기	Through Put Up/Down	
		Up	Down
1	-57dbm	421M	303M
2	-48dbm	414M	377M
3	-42dbm	363M	360M

창조관 7층

AP
 측정위치

-45dbm -55dbm -65dbm -75dbm

매우 좋음 좋음 보통 약함



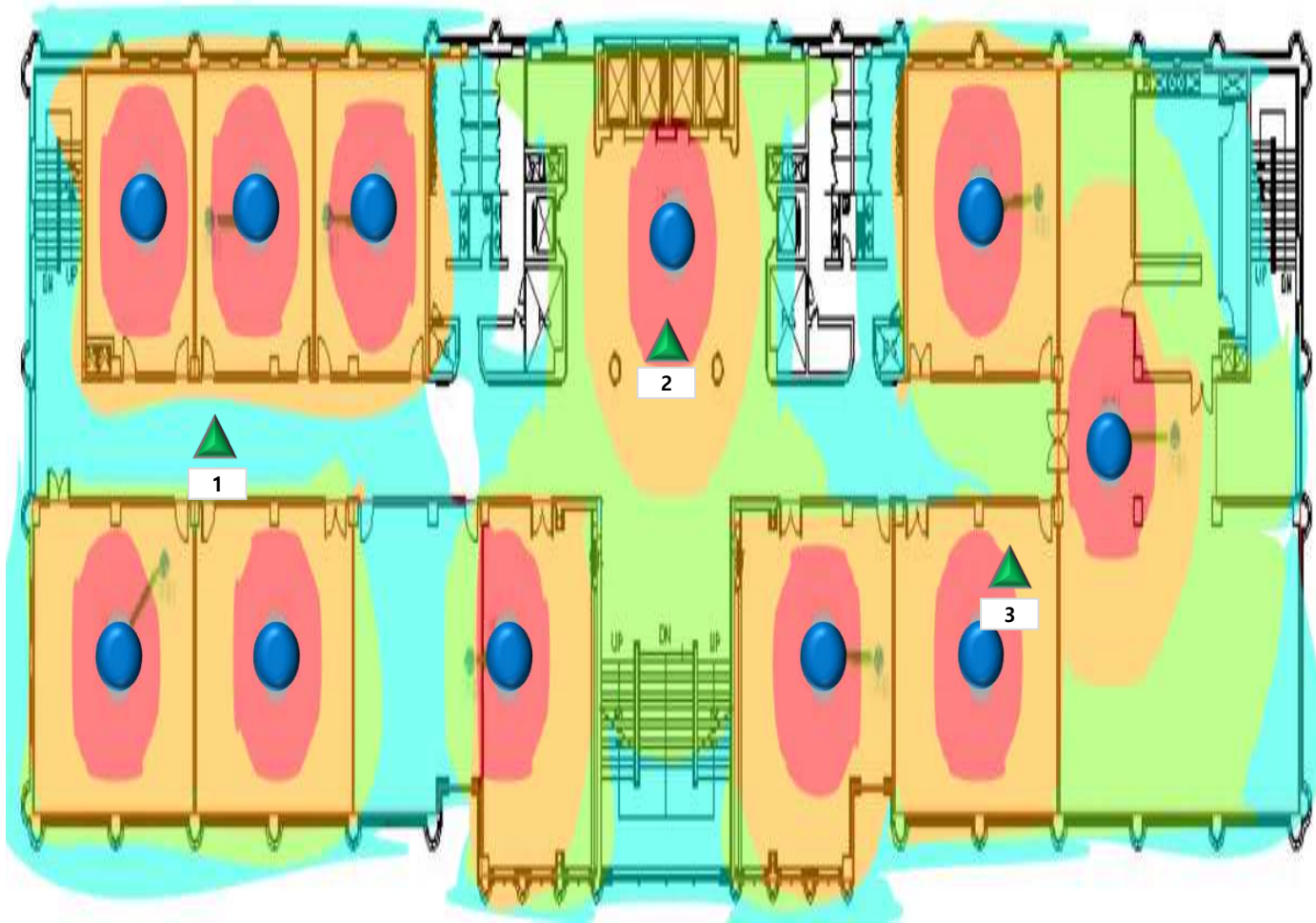
측정 위치	신호세기	Through Put Up/Down	
		1	-45dbm
2	-46dbm	421M	394M
3	-47dbm	378M	355M

창조관 8층

AP 측정위치

-45dbm -55dbm -65dbm -75dbm

매우 좋음 좋음 보통 약함



측정 위치	신호세기	Through Put Up/Down	
		1	-64dbm
2	-49dbm	410M	384M
3	-48dbm	336M	310M

창조관 9층



AP



측정위치



-45dbm

매우 좋음



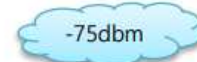
-55dbm

좋음



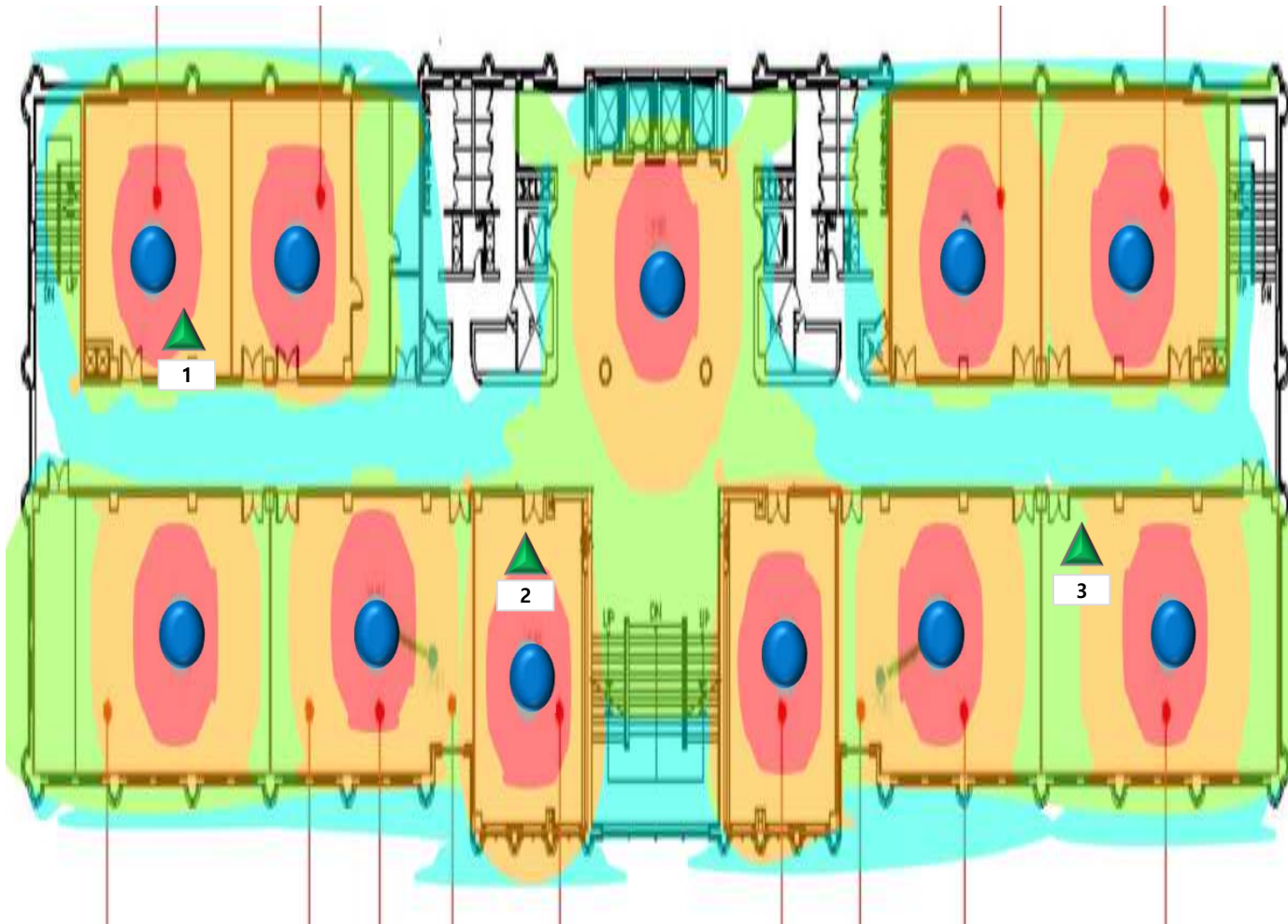
-65dbm

보통



-75dbm

약함

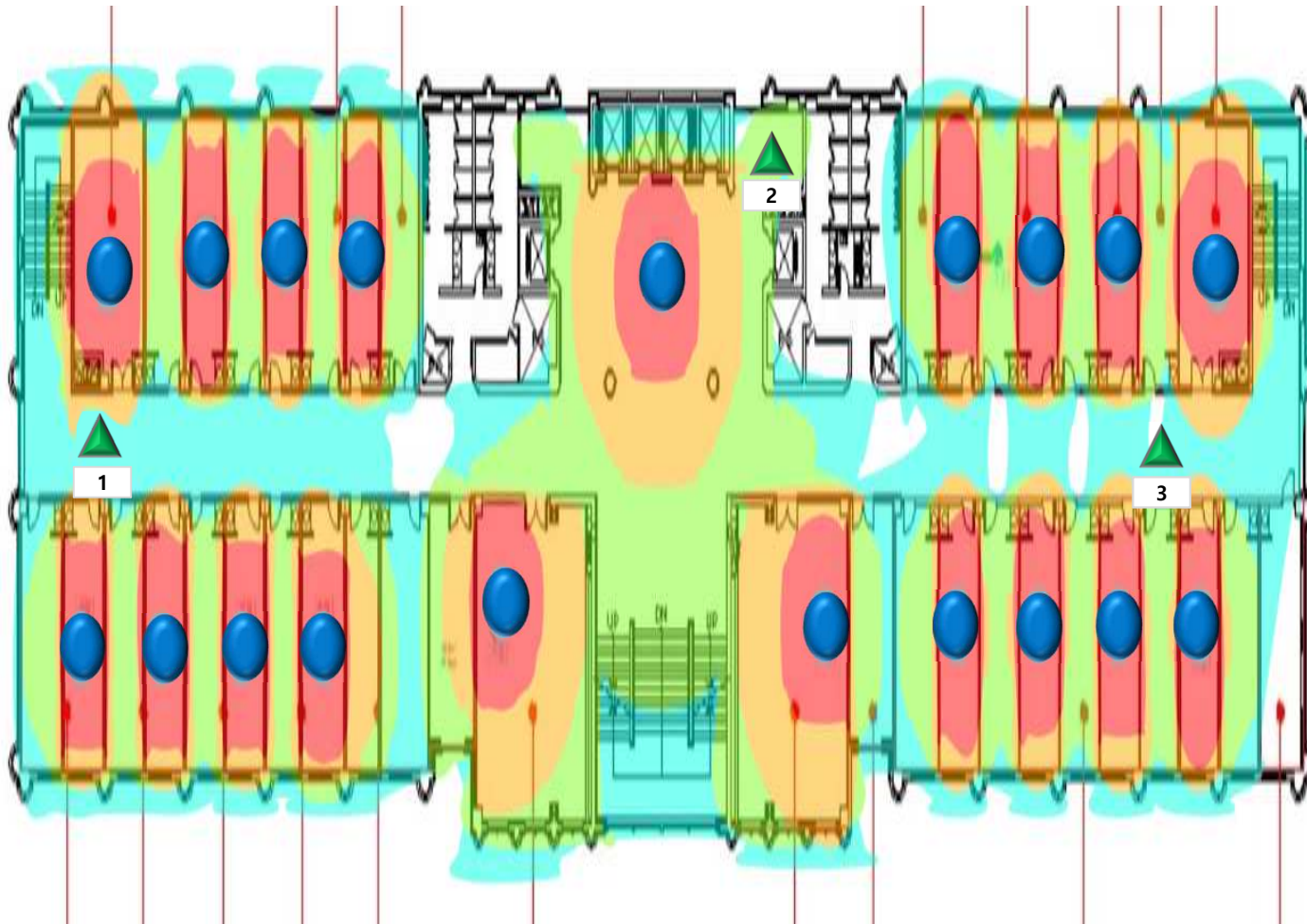


측정 위치	신호세기	Through Put Up/Down	
		1	-44dbm
2	-48dbm	347M	333M
3	-51dbm	363M	339M

창조관 10층

AP
 측정위치

-45dbm
매우 좋음
 -55dbm
좋음
 -65dbm
보통
 -75dbm
약함



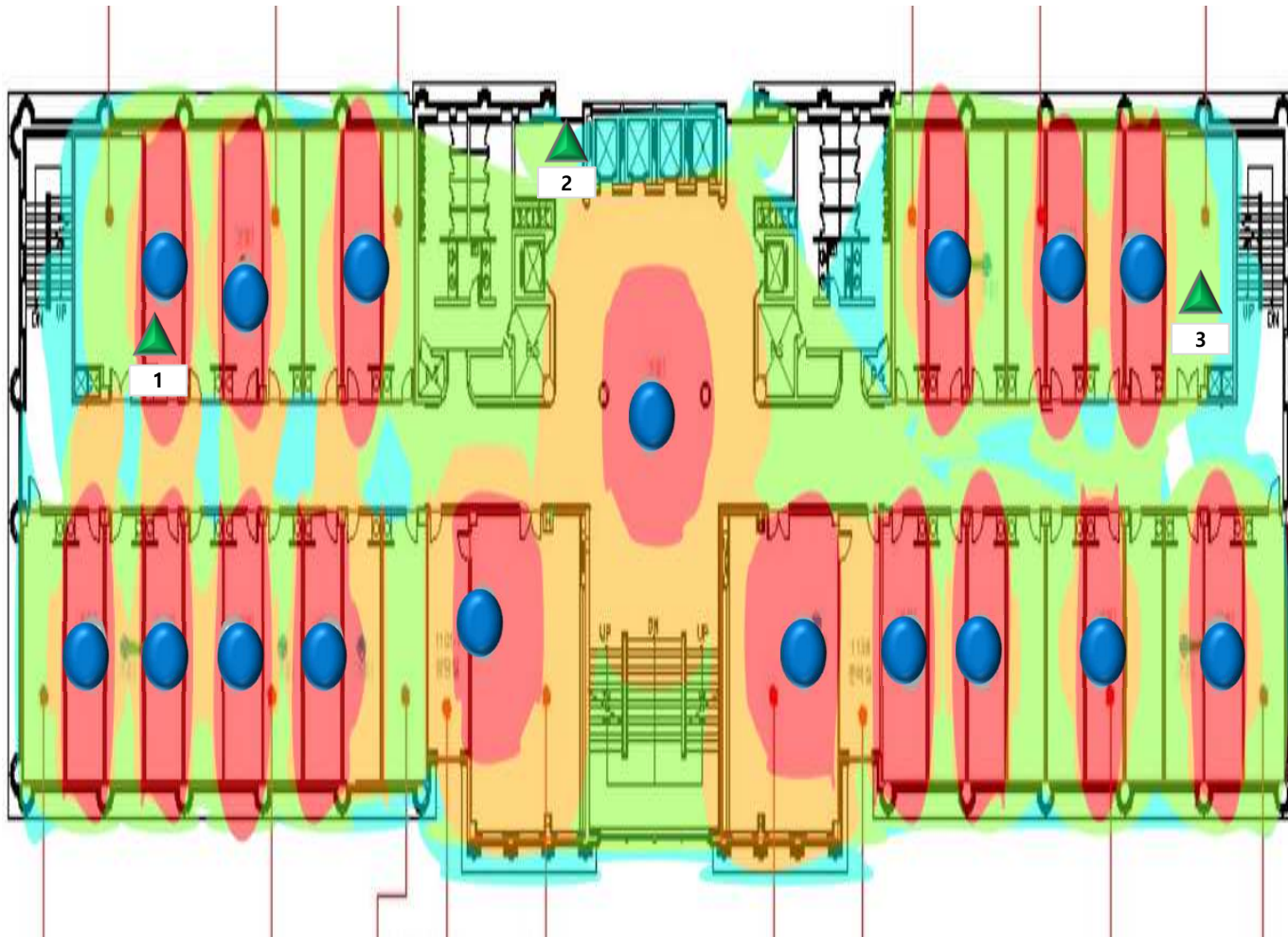
측정 위치	신호세기	Through Put Up/Down	
		Up	Down
1	-59dbm	343M	221M
2	-62dbm	297M	286M
3	-69dbm	436M	285M

창조관 11층

AP 측정위치

-45dbm -55dbm -65dbm -75dbm

매우 좋음 좋음 보통 약함



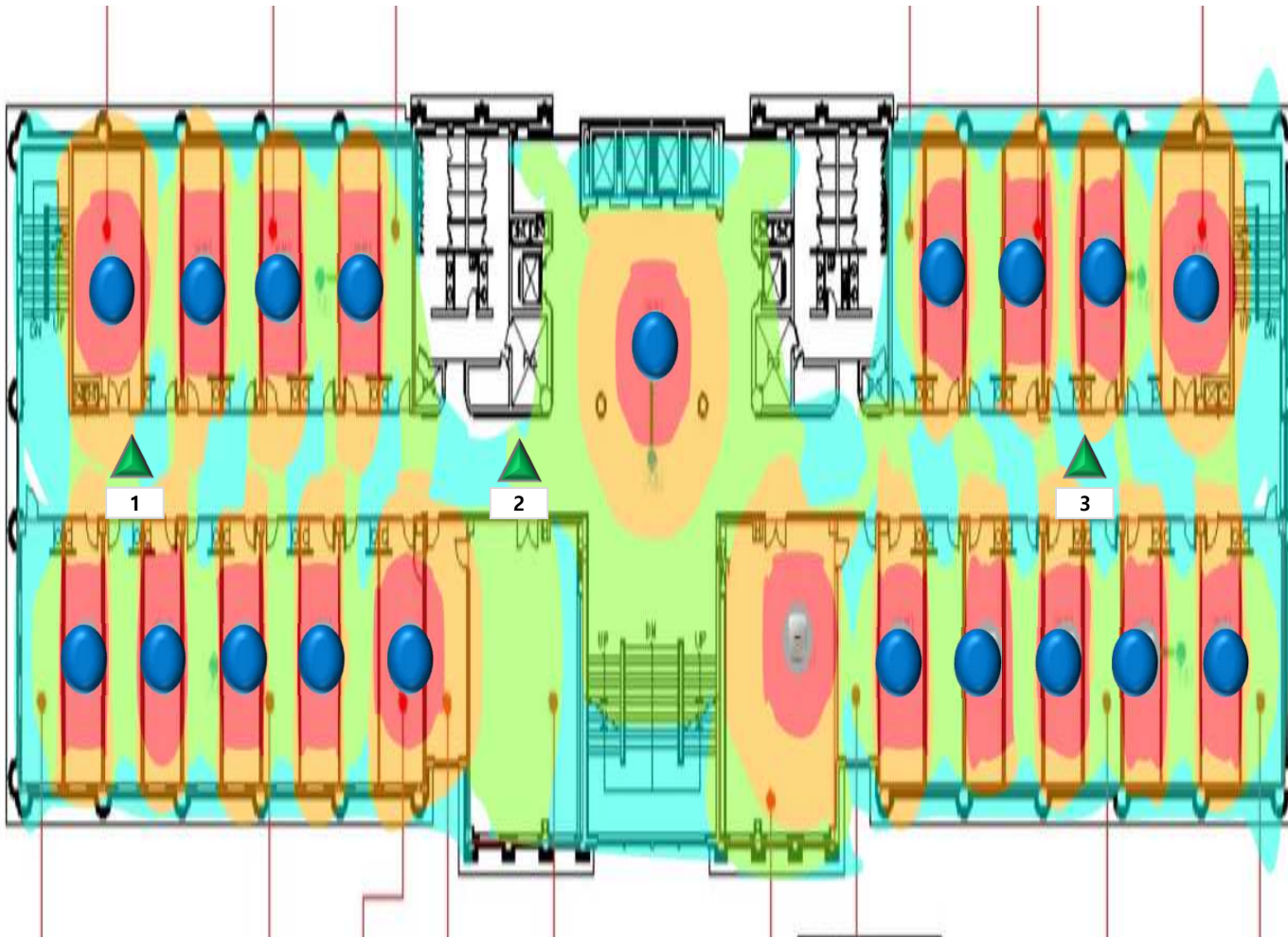
측정 위치	신호세기	Through Put Up/Down	
		1	-48dbm
2	-68dbm	352M	265M
3	-58dbm	436M	285M

창조관 12층

AP 측정위치

-45dbm -55dbm -65dbm -75dbm

매우 좋음 좋음 보통 약함



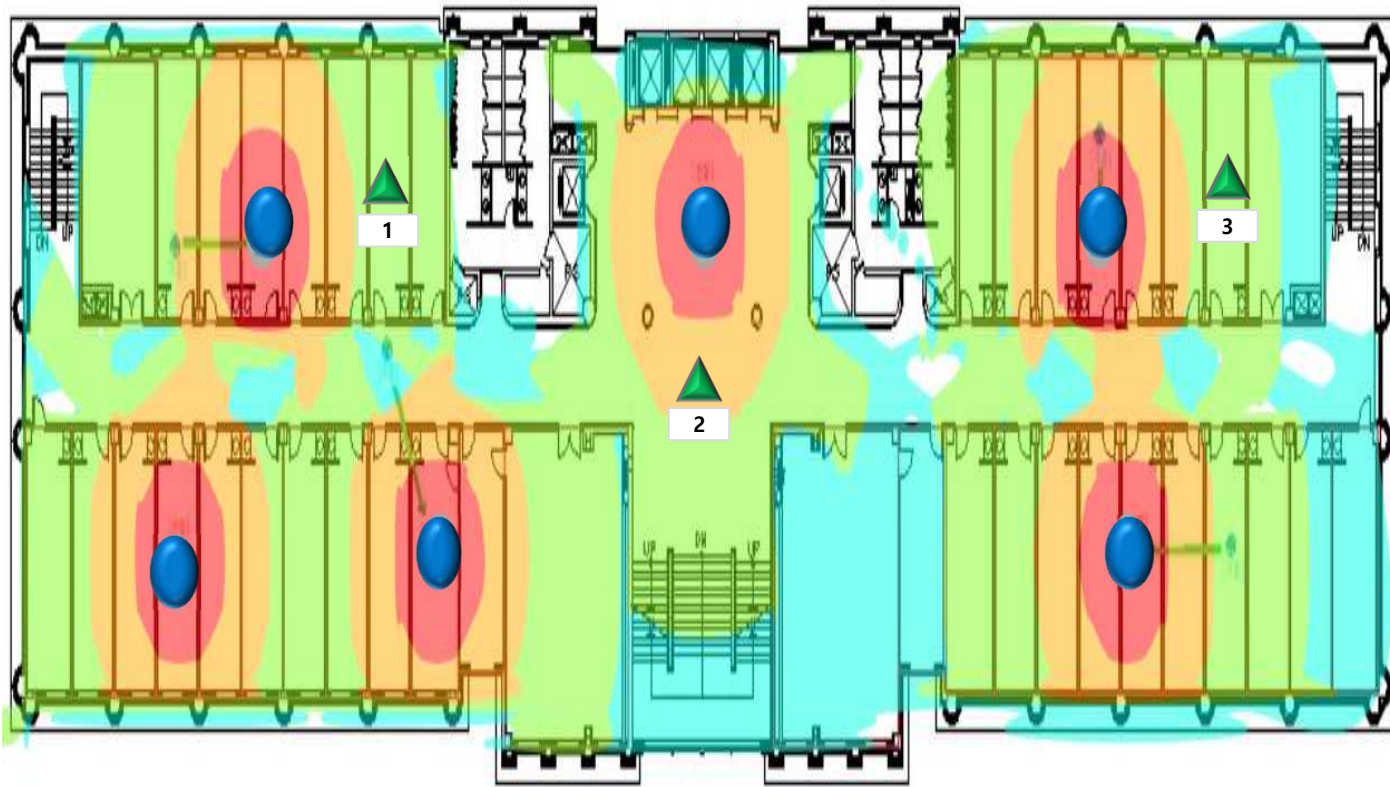
측정 위치	신호세기	Through Put Up/Down	
		Up	Down
1	-54dbm	417M	291M
2	-69dbm	373M	248M
3	-62dbm	345M	293M

창조관 13층

● AP ▲ 측정위치

-45dbm -55dbm -65dbm -75dbm

매우 좋음 **좋음** **보통** **약함**



측정 위치	신호세기	Through Put Up/Down	
		1	-61dbm
2	-49dbm	285M	263M
3	-53dbm	382M	358M